



A cool breeze drifts through the palms;
the cloudless sky is bright and beautiful.

You enjoy an afternoon by the lake. Children play in the distance while others walk, chat and lounge by the glistening pool. An extraordinary day, a moment to treasure, yet not unlike every other day since you arrived at your new Jade home.

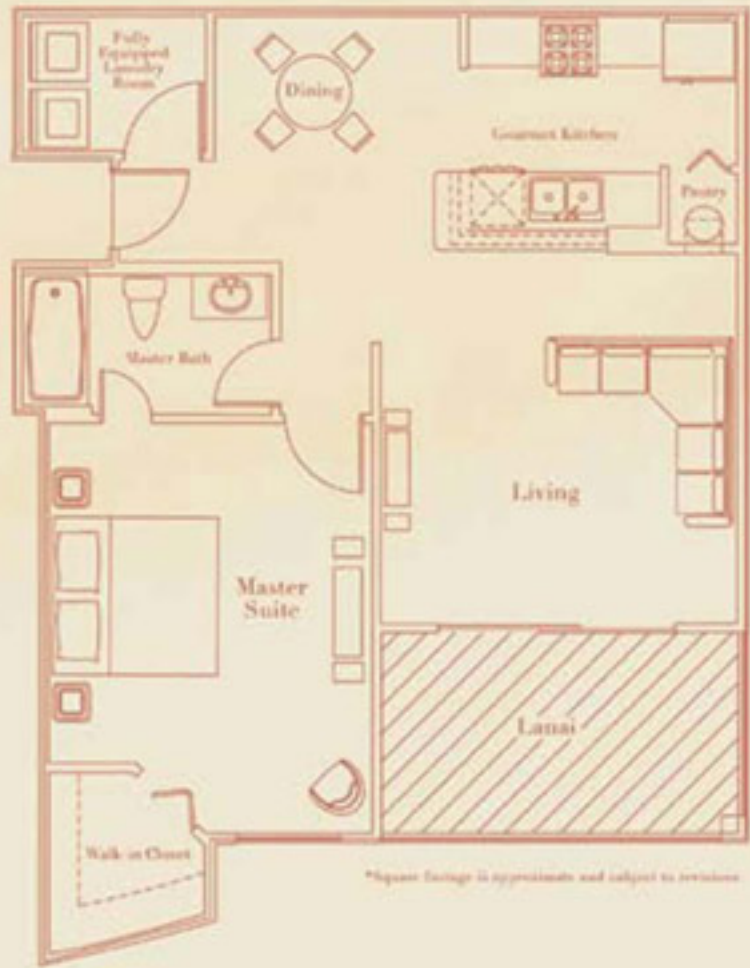
A rare gem has emerged in the heart of Tampa Palms. The perfect union of luxury and style...each one, two and three bedroom residence exudes opulence and comfort. Lofty ceilings, gourmet kitchens, private patios or solariums, full-size washer and dryers, and more are just a few of the details that make each Jade home special.

Nothing short of spectacular...Jade brings paradise home.



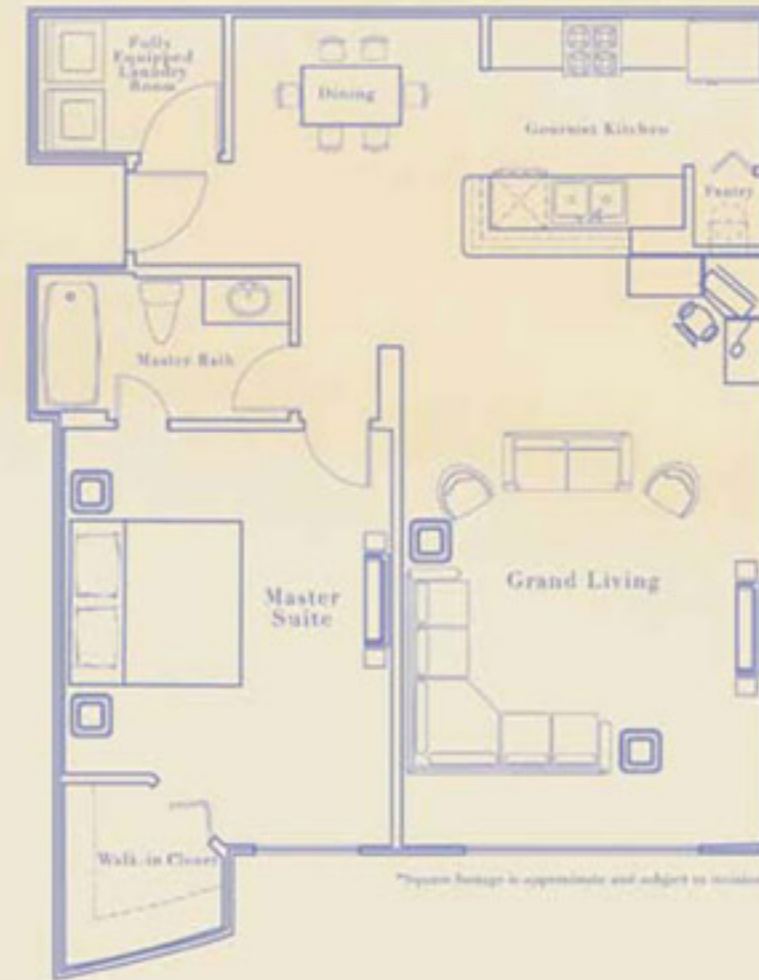
AMBER

1 Bedroom 1 Bath 775 sq. ft.



BRILLANTE

1 Bedroom 1 Bath 887 sq. ft.

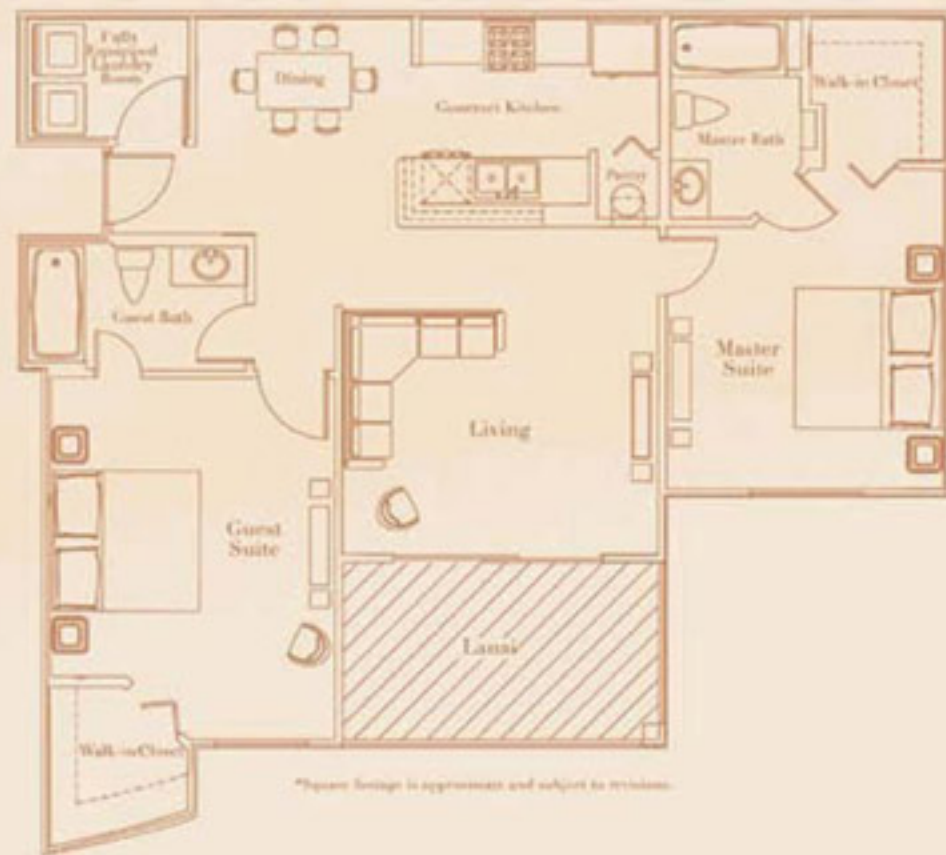


Picture yourself here...



CRYSTAL

2 Bedrooms 2 Baths 1,034 sq. ft.

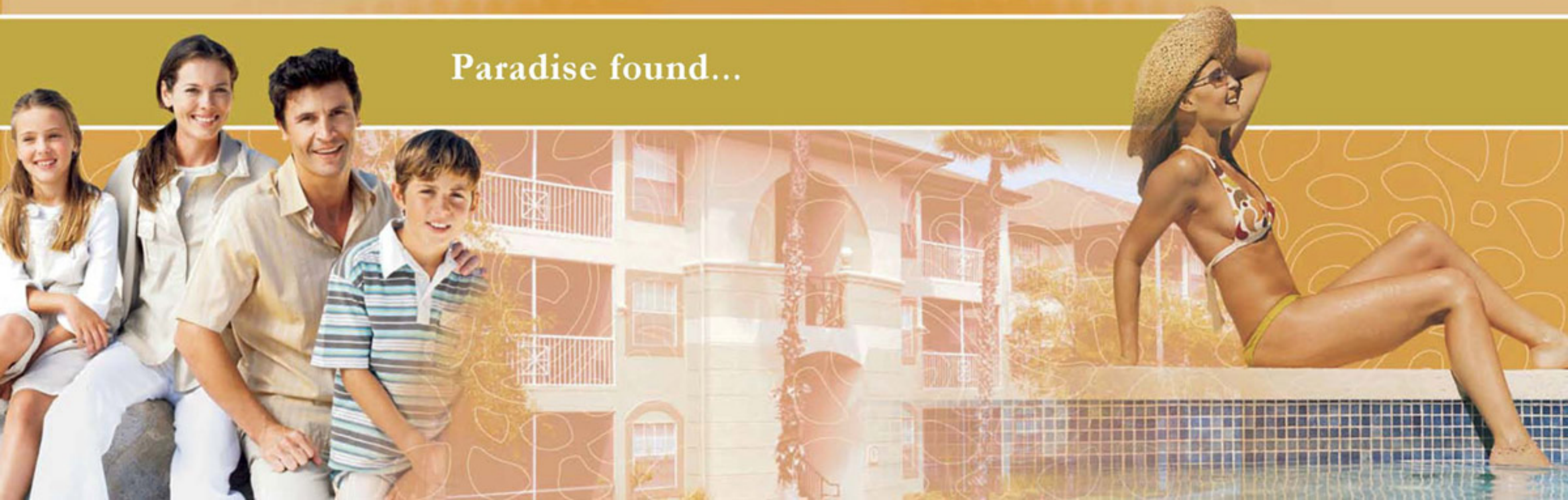


DIAMOND

2 Bedrooms 2 Baths 1,146 sq. ft.

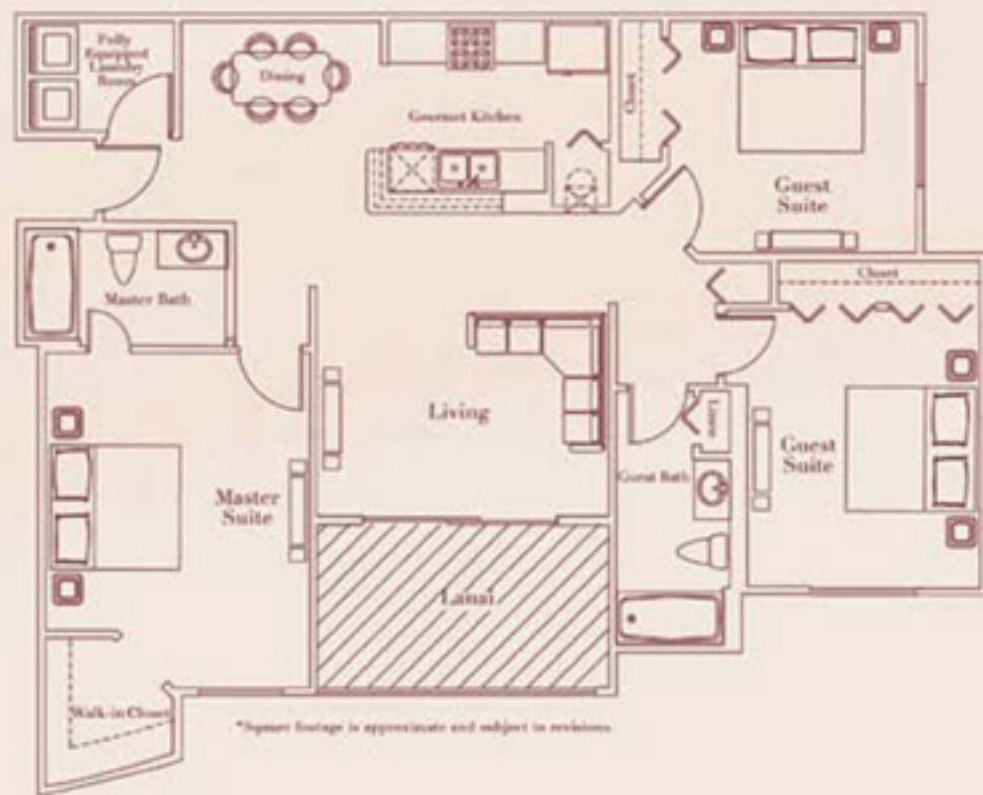


Paradise found...



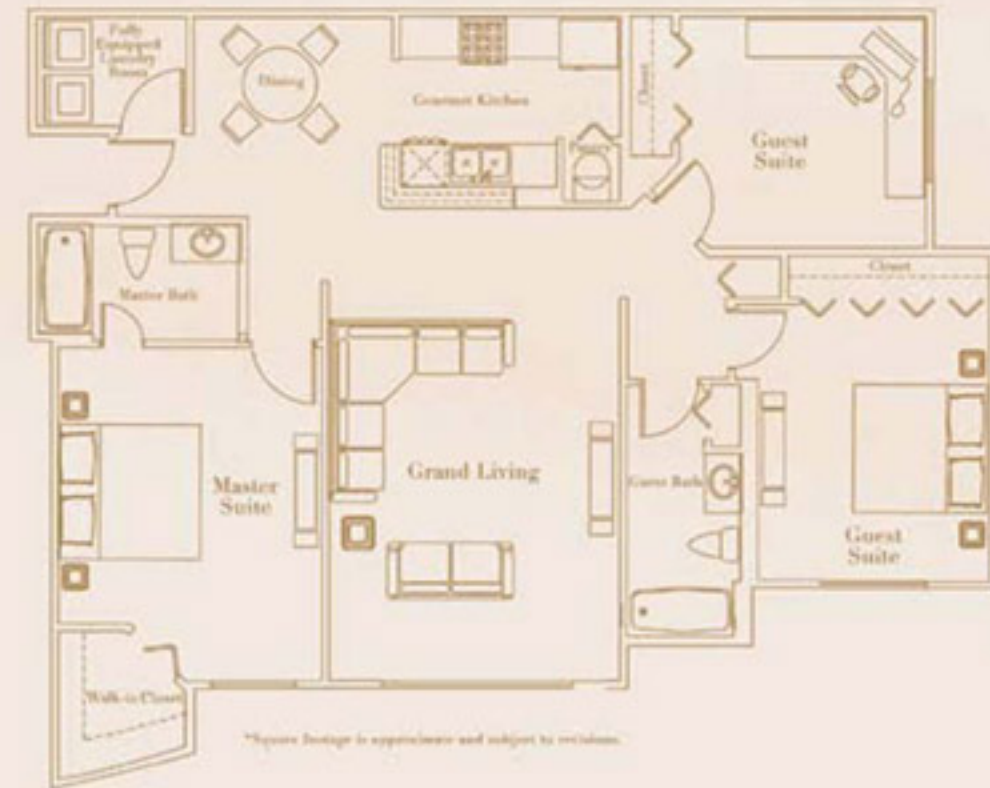
EMERALD

3 Bedrooms 2 Baths 1,230 sq. ft.

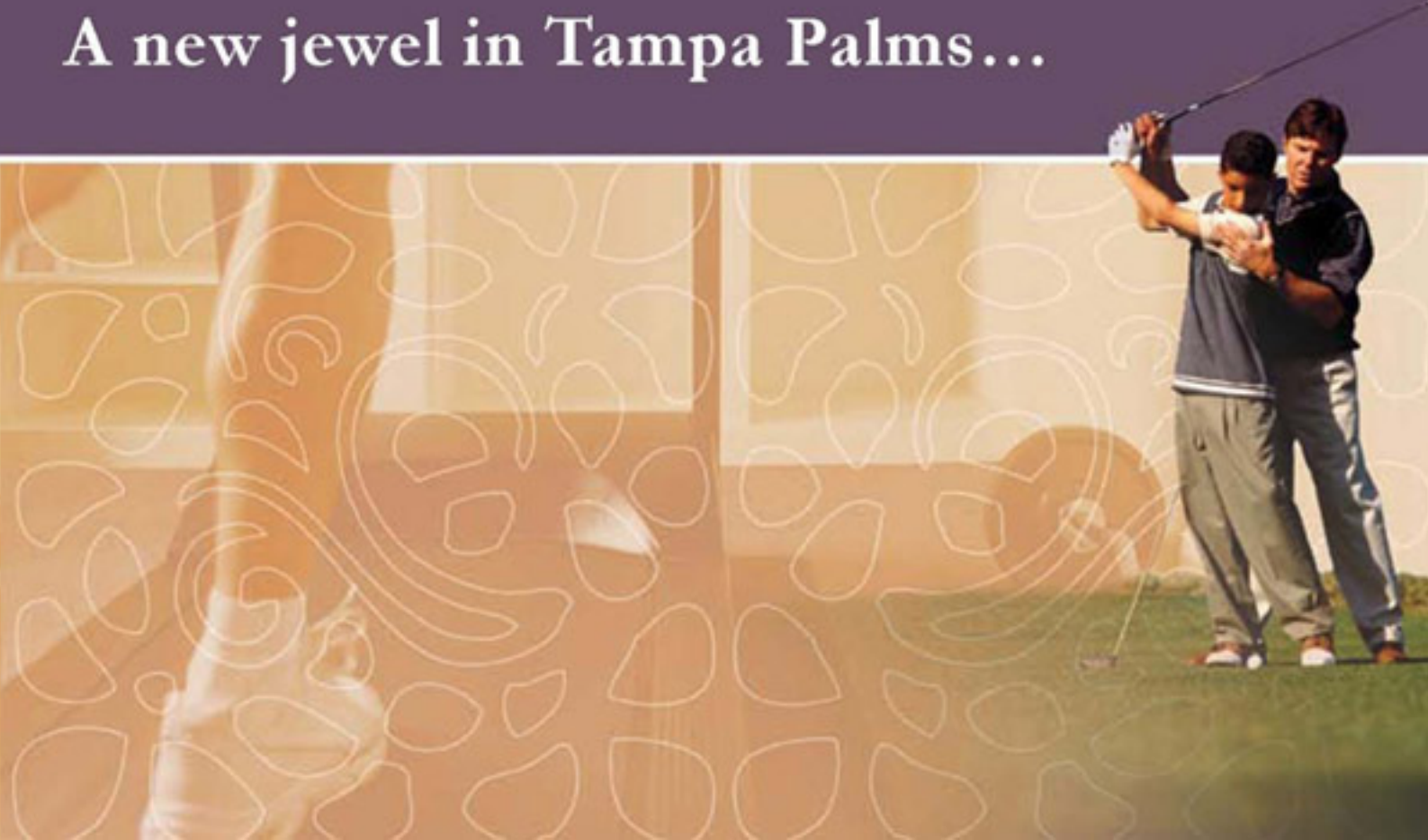


FLORA

3 Bedrooms 2 Baths 1,340 sq. ft.



A new jewel in Tampa Palms...



Jade at Tampa Palms

Interior Features

Standard finishes include, gourmet kitchens with upgraded appliances, above counter microwave, designer custom cabinets, double sink, breakfast bar, ceramic tile*, 9 & 10 foot dramatic ceilings with crown molding, and ceramic tile tub surrounds.

- Intrusion alarms
- Screened lanais **
- Fire protection systems
- Ample walk-in closets
- Full size washer and dryer in every home

*Ceramic tile in select areas ** Screened lanais in select floor plans

Resort Features

Exclusive membership to the "Tiffany Club", A Private Resident-Only Center featuring First-Class Concierge Service, a State-of-the-Art Health Club with Weekly Fitness Classes, South-Beach inspired Pool Deck with Stereo-Surround Music and bubbling Serenity Spa, a Designer Catering Kitchen with Social Bar, and a Fully Furnished Media and Entertainment Lounge with Plasma Screen.

- Indoor air-conditioned Racquetball Court
- Lighted Tennis Court
- Designated Pet Walk
- Car Care Center
- Gated Entry
- Available Remote Access Garages

Community Features

Prestigious Tampa Palms address puts you within walking distance of exciting shopping venues, local eateries, charming boutiques, quaint coffee shops and fabulous movie theaters.

- Convenient access to I-75 and I-275
- Area Resort Spas
- Active Neighborhood Parks
- Community Baseball Field
- Excellent A-Rated Schools



Welcome home to Jade.



- A Lawton Chiles Middle School
- B Liberty Middle School
- C Freedom High School
- D Excellent Dining
- E Tampa Palms Golf and Country Club



DEVELOPER STORY

Grec Conversions

Converting Where People Live

Grec Conversions is considered one of Florida's most reputable builders and developers, and has forged a path toward converting the way people live in Florida by offering quality and impeccable residences. Grec Conversions' legacy of quality home development in South Florida spans two decades with precedent setting construction in the areas of single-family homes and condominium conversions.

In offering resort-style amenities and tasteful residential communities, Grec Conversions brings to life the desires of homebuyers and fulfills their dreams with each community. The properties offer the highest level of sophistication and style, and are acquired with a homebuyer's needs in mind.

Grec Conversions has been a leading force in the condominium conversion market with more than 10,000 units to its credit. The principals possess the knowledge and expertise in acquiring and converting quality and affordable residences for eager homebuyers. The employees share the vision, commitment and attention to detail that the principals assembled to create the company. This award-winning company has set the standards for affordable living and provides value with each project it offers the market.

Located in the state's most desired cities such as Orlando, Tampa and the counties of Palm Beach, Broward and Miami-Dade are some of their most notable projects including Villas of Miami Lakes, Parc Vista, Aquasol, Soleil at Fontainebleau, The Courts at Kendall, Reflections at Pembroke Pines, The Beach Club at Fontainebleau, Palms at Pembroke, Waterside Luxury Townhomes, Ponte Verde Condominiums, Verano at Miramar, Venetian Place, Palms of Pembroke, and Carrington Park.



The ideal location for an ideal lifestyle.

